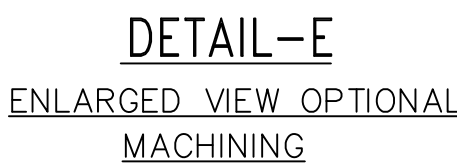



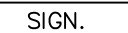
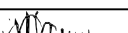
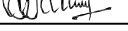
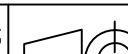
ENTORY NO



1. MACHINE ALL SURFACES TO $\sqrt{\quad}$ UNLESS OTHERWISE SHOWN.
2. BREAK ALL SHARP EDGES AND CORNERS UNLESS OTHERWISE NOTED.
3. SUPPLY AS PER CUSTOMER'S APPROVED QUALITY PLAN.
4. FOR BORE MACHINING & SPACER GRINDING VALUES REFER TABLE OF PROD.STD. BA76002.
5. ATTEST MATERIAL.
6. VAR 01 WITH INCH THDS.
VAR 02 WITH METRIC THDS.

THE FOLLOWING CONDITIONS APPLY EXCEPT OTHERWISE STATED.

1. REF. TO HY0230261 FOR UNSPECIFIED TOLERANCES.
2. CHAMFER M/CD SHARP EDGES 1.2 TO 1.0 AT 45°.
3. INTERNAL M/CD CORNER RADII 1 TO 0.7.
4. THE SURFACE ROUGHNESS WHEREVER NOT SHOWN SHALL BE TAKEN FROM THE SURFACE ROUGHNESS SHOWN OUT SIDE BACK SLASHES GIVEN AT THE TOP MOST RIGHT CORNER OF THE DRG.

TYPE OF PRODUCT OR NAME OF CUSTOMER/PROJECT		1003 XRP BOWL MILL					
 BHARAT HEAVY ELECTRICALS LTD. HYDERABAD			NAME	SIGN.	DATE	NO. OF VAR.	
		DRN.	N.D.S		15.4.99		
		CHD.	S.G		15.4.99		
		APPD.	K.M.RAO		15.4.99		
DEPT. PULV. ENGG		SCALE	WEIGHT (KG)	REF. TO ASSY DRG. C-101-01081/5 CE: P/N: 101-01081		ITEM NO.	NO. OF ITEMS
CODE 446		1: 2.5	748.767				
TITLE				DRAWING NO.		REV.	
UPPER JOURNAL HOUSING				1-61-000-00365		06	
				SHEET NO		NO OF SHEETS	